

WBmerge Installation Guide



Last Updated 12/20/2022

Copyright 2019 - 2022 Workbook Tools, LLC

Please carefully review this document before installing WBmerge.

Understanding the Installation Process

Workbook Tools uses Microsoft ClickOnce deployment technology to install the WBmerge software onto the customer's computer. The installation package is stored on the Internet and the customer connects to a webpage with their web browser.

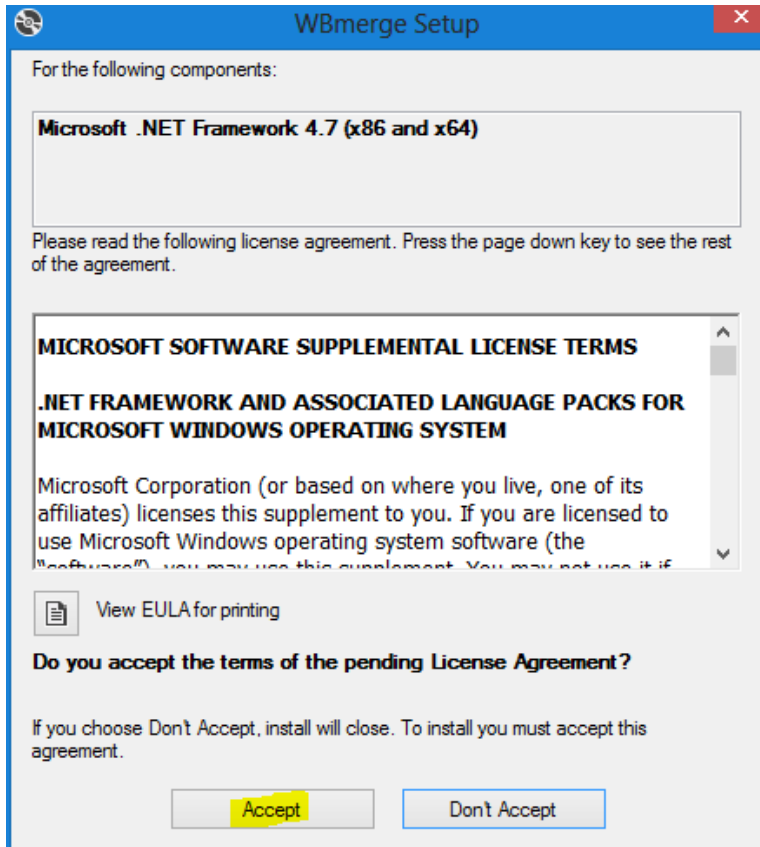
The core principle of ClickOnce is to ease the deployment of Windows applications. In addition, ClickOnce aims to solve three other problems with conventional deployment models: the difficulty in updating a deployed application, the impact of an application on the user's computer, and the need for administrator permissions to install applications.

- ClickOnce-deployed applications are considered "low impact", in that they are installed per user, not per machine.
- Administrator privileges are not required to install ClickOnce applications.
- Each ClickOnce application is isolated from other ClickOnce applications.

Required .NET Framework

Microsoft .NET Framework 4.7 or a higher version must be installed for WBmerge to run. If your version of the Microsoft .NET Framework is below the required minimum version of 4.7 you will be presented with the below screen.

Please click the “Accept” button to start the installation of the required minimum version of the Microsoft .NET Framework.



Supported Web Browsers for Installation

Each web browser behaves differently, some will allow you to start the WBmerge installer by clicking on the "Install" button on the installation page. Others will only download setup.exe to your local computer where you will have to navigate to the file and double click it to start the installer. Below is a table of tested web browsers and their known behaviors.

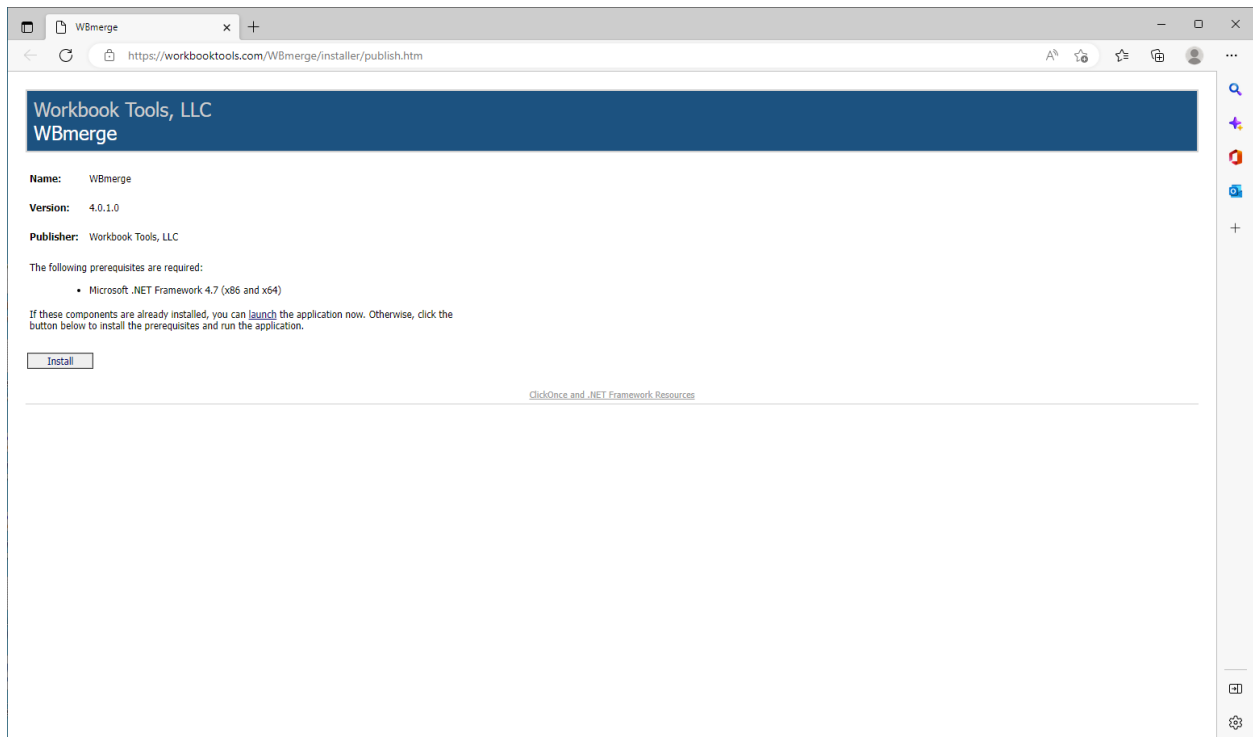
| Web Browser | Ability to Start the WBmerge Installer from the Browser | Save "setup.exe" to local computer and run from File Explorer to install WBmerge |
|----------------------------------|---|--|
| Google Chrome | Yes (Double click on "seteup.exe") | Yes |
| Microsoft Edge | Yes (Option to Run will be shown) | Yes |
| Mozilla Firefox | No | Yes |
| Microsoft Internet Explorer (IE) | Yes (Option to Run will be shown) | Yes |
| Opera | No | Yes |

Install WBmerge

Click on the below URL to open the installation web page for WBmerge:

<https://workbooktools.com/WBmerge/installer/publish.htm>

We recommend downloading the file named setup.exe from the installer page rather than running it from the web. We will use setup.exe in the next step to verify the file is secure.



Security Verification of Setup.exe

Workbook Tools will provide a SHA256 hash for setup.exe, used to launch the WBmerge installer. SHA-256, which stands for secure hash algorithm 256, is a cryptographic hashing algorithm (or function) that's used for message, file, and data integrity verification.

Please follow these steps to verify your copy of setup.exe is secure:

1. Open <https://workbooktools.com/WBmerge/installer/publish.htm>
2. Click the install button at the lower left and save setup.exe to your computer
3. Open PowerShell (Windows Key + r Key opens run command => Type in PowerShell and click OK to open PowerShell)

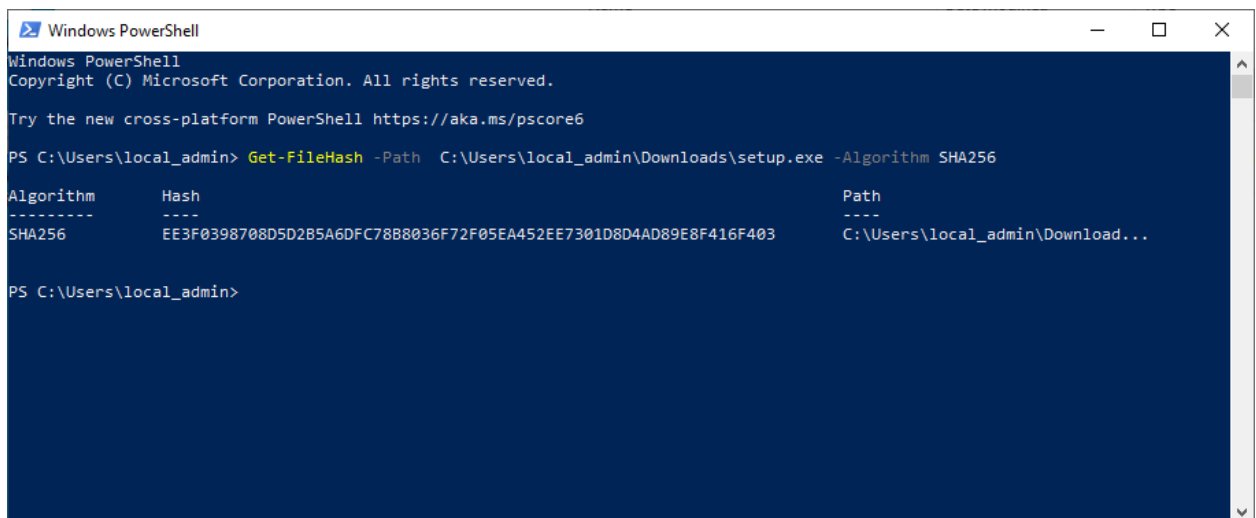
The below command will need to know the exact location of setup.exe

My file location below is C:\Users\local_admin\Downloads / Adjust the below command for your file location

Execute the below command in PowerShell / Make sure to adjust the Path

```
Get-FileHash -Path C:\Users\local_admin\Downloads\setup.exe -Algorithm SHA256
```

This will create a SHA256 hash for your copy of setup.exe / Example below



```
Windows PowerShell
Copyright (C) Microsoft Corporation. All rights reserved.

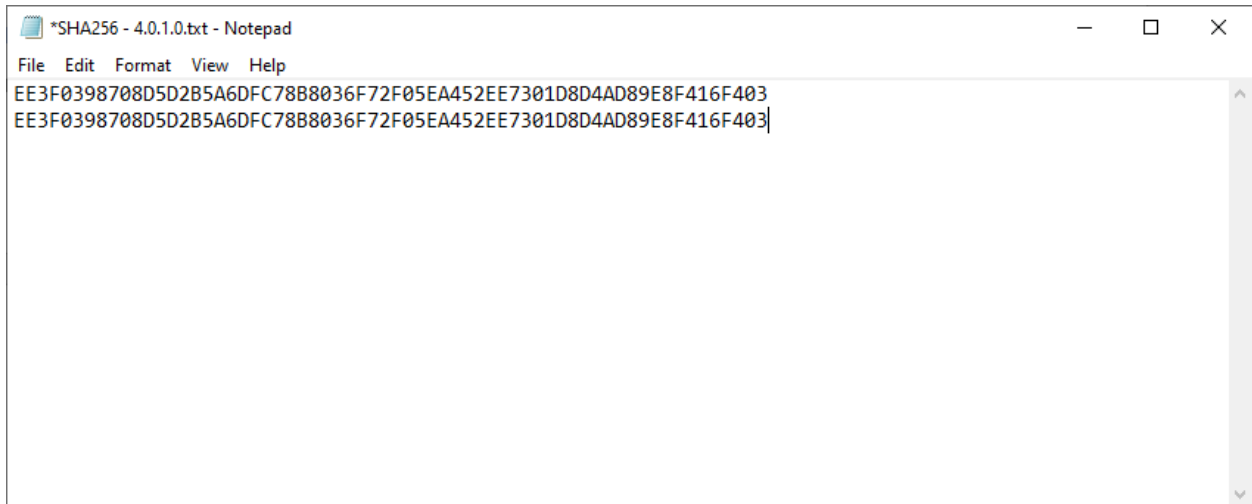
Try the new cross-platform PowerShell https://aka.ms/pscore6

PS C:\Users\local_admin> Get-FileHash -Path C:\Users\local_admin\Downloads\setup.exe -Algorithm SHA256

Algorithm      Hash
-----
SHA256         EE3F0398708D5D2B5A6DFC78B8036F72F05EA452EE7301D8D4AD89E8F416F403
                C:\Users\local_admin\Download...
```

4. Copy the SHA256 for your copy of setup.exe and open notepad and paste it in. Then paste in the SHA256 from <https://workbooktools.com/wbmerge>
5. Confirm your SHA256 is the exact same as the one located at <https://workbooktools.com/wbmerge>

6. If the SHA256 **DO NOT** match **STOP** and send us an email from <https://workbooktools.com/contact>
7. If they match then double click setup.exe to begin installing WBmerge

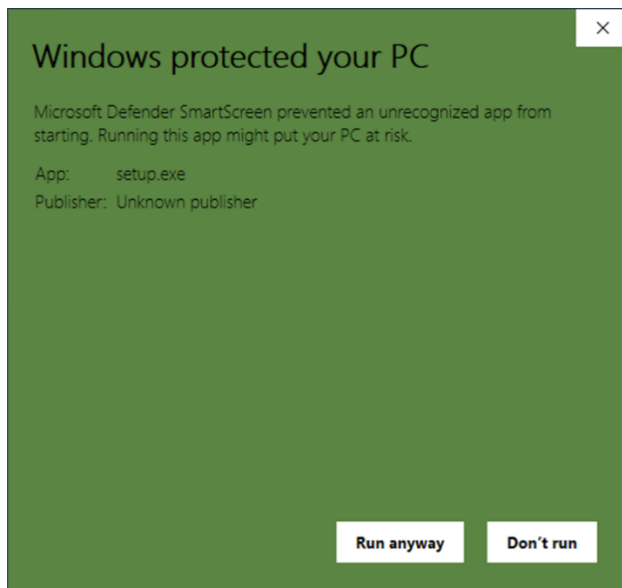


The image shows a Notepad window titled "*SHA256 - 4.0.1.0.txt - Notepad". The window contains two lines of text, both of which are identical SHA256 hashes: "EE3F0398708D5D2B5A6DFC78B8036F72F05EA452EE7301D8D4AD89E8F416F403". The cursor is positioned at the end of the second line.

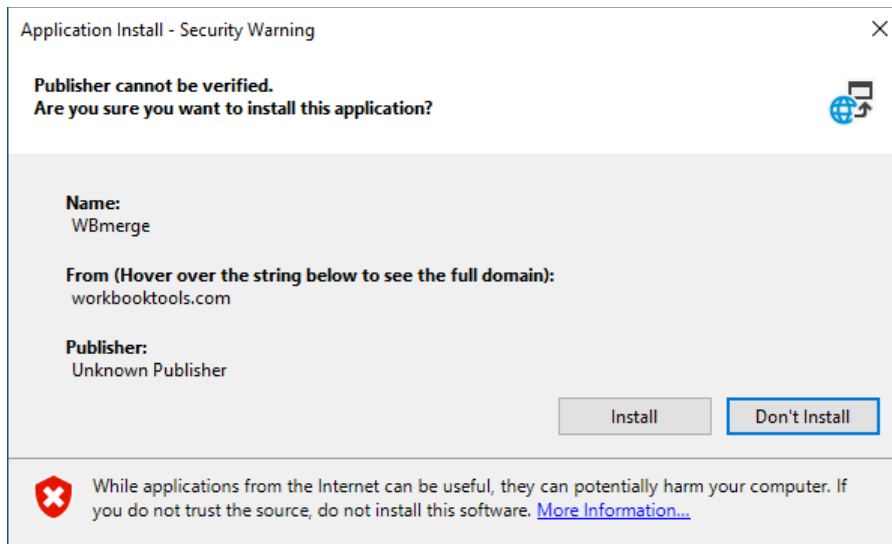
Windows Defender SmartScreen will attempt to stop the installation. You will have to click **More Info**



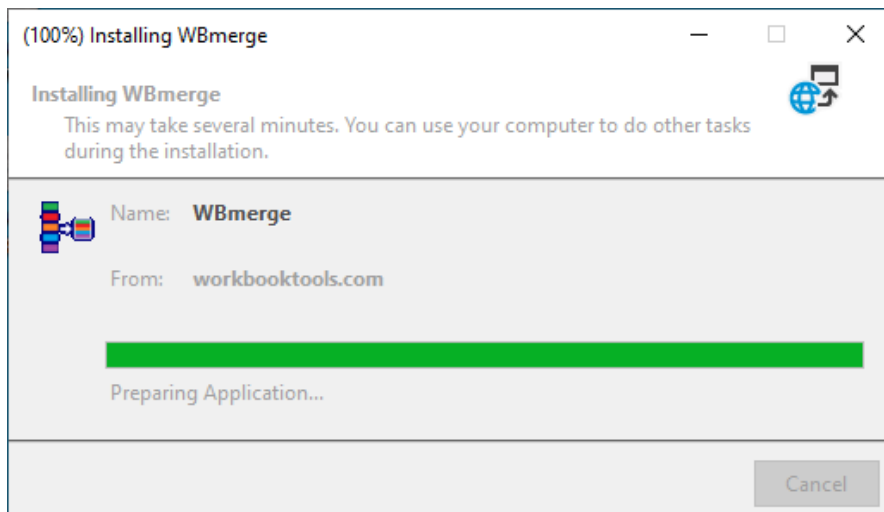
Then click the **Run anyway** button



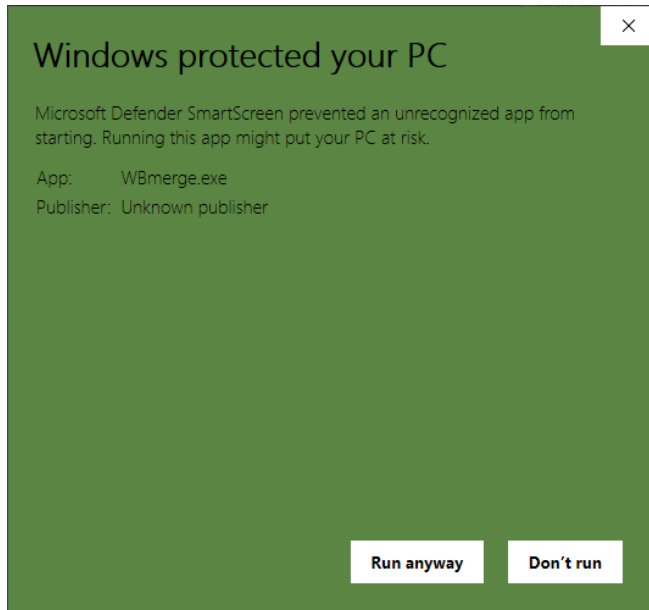
You will then click the **Install** button



The below window will appear during the installation process



Once the WBmerge is installed you will be challenged by Windows Defender SmartScreen again. Please follow the same steps from page 7. Please note the App will show WBmerge.exe.



WBmerge will open and you will see the below windows. You will need to accept the License Agreement in order to use WBmerge.

WBmerge License Terms (Workbook Tools, LLC)

WORKBOOK TOOLS, LLC SOFTWARE LICENSE AGREEMENT

Software Product - WBmerge

Copyright 2019-2022 Workbook Tools, LLC

Last Updated 12/20/2022

Thank you for choosing Workbook Tools, LLC WBmerge. (the "Software"). This is a license agreement between you ("Licensed User") and Workbook Tools, LLC.

For your convenience, this Software License Agreement (the "Agreement") is organized into four (4) sections. The first includes introductory terms phrased in a question-and-answer format (section 1); the additional terms and limited warranty follow and contain greater detail (section 2). Section 3 is the GNU Lesser General Public License covering EPPlus included within WBmerge. Section 4 is the GNU General Public License Version 2.0, June 1991 covering the MySQL Connector/NET 8.0. You must review the entire Agreement, all the license terms are important and together create this contract that applies to you, the Licensed User.

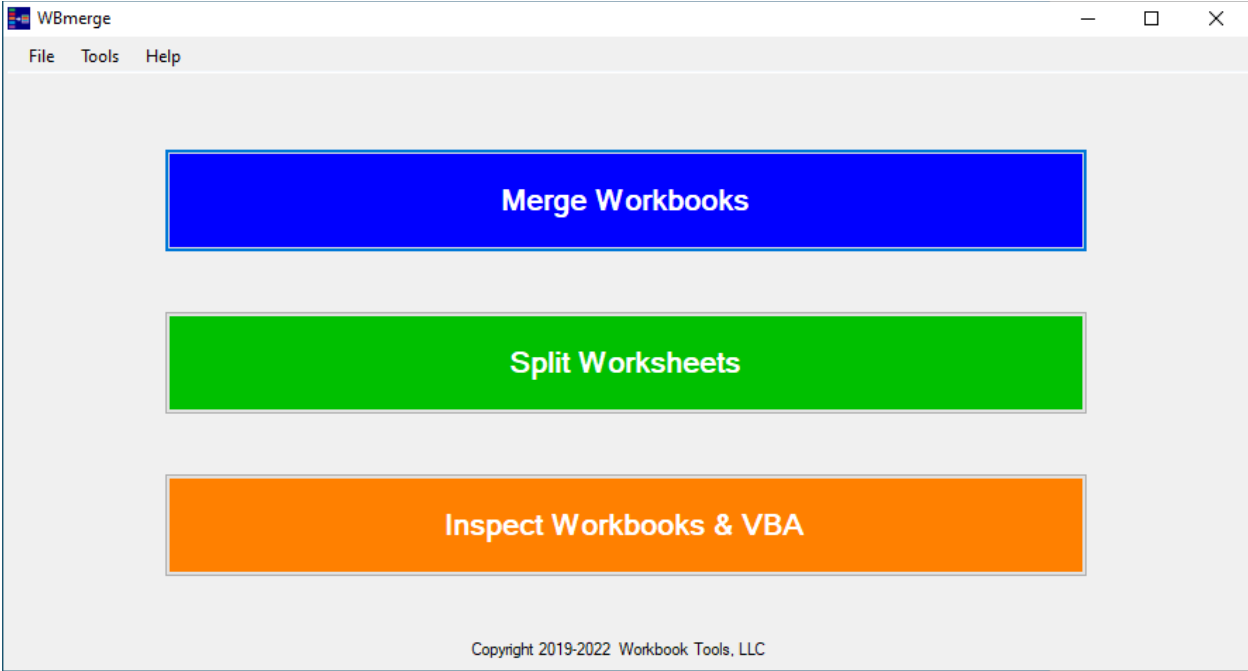
By accepting the Agreement or using the Software, you agree to all license terms and consent to the transmission of information back to Workbook Tools, LLC from the Software as laid out in this Agreement. If you do not accept and comply with these license terms, you may not use the Software or features.

SECTION 1:

What legal rights do I have to use the Software?
We do not sell our Software or your copy of it - we only license it. Under our subscription license model, we grant you, the Licensed User, the right to install and run up to two (2) copies of the Software with an "Active Subscription License". The Software may only be used by the Licensed User and must comply with the Agreement. Because the Software is licensed, not sold, Workbook Tools, LLC reserves all rights (such as rights under intellectual property laws) not expressly granted in the Agreement.

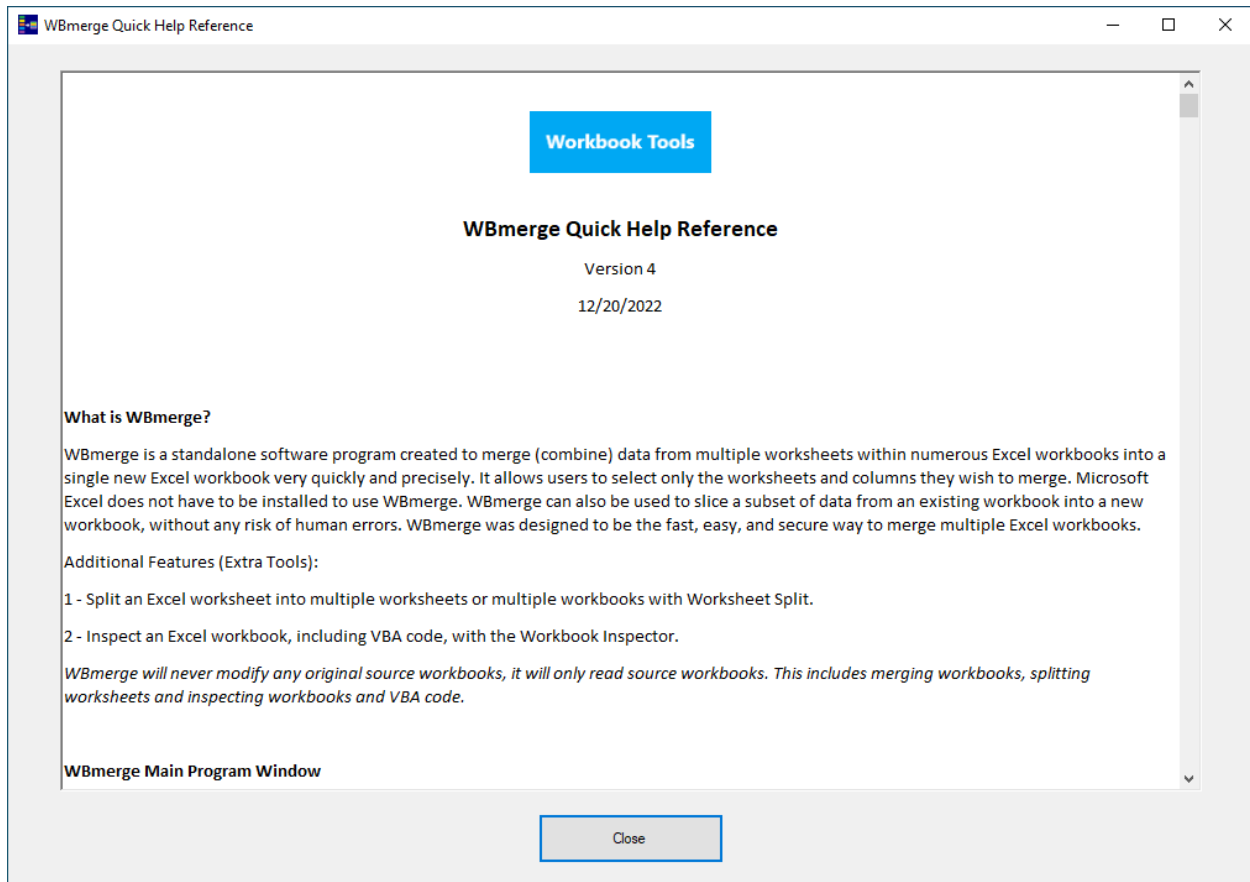
[I Accept the License Agreement](#) [I Decline the License Agreement](#)

Below is the WBmerge main window you will see once you have accepted the License Agreement



How to Use WBmerge

From the main menu bar on the upper left of the main program screen click “Help” then click “Quick Help Reference” and the below screen will open. This screen will guide you through using WBmerge and the explain all program options.



How to Start WBmerge once Installed

The installation process will place an icon to start WBmerge on your desktop for easy access. This is the easiest way to start WBmerge. You can also pin the WBmerge to your Windows taskbar and start menu. Please review the Microsoft help documentation for how to install a program to the taskbar or the start menu.



Look for the WBmerge icon on your desktop and click it to start WBmerge

New Versions of WBmerge

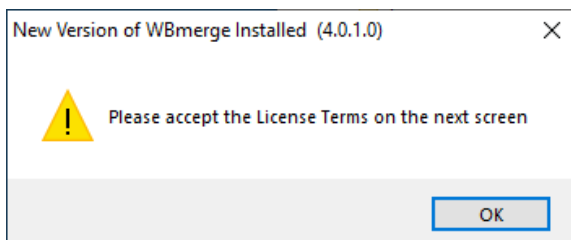
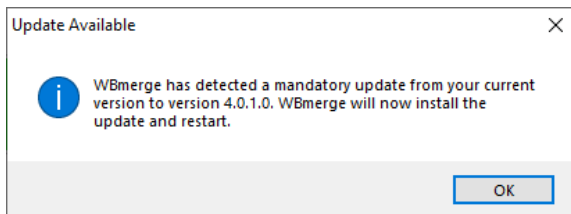
It is important to note when new versions of WBmerge are made available you will be prompted to install the latest version. Some new versions will require you to install the new version and some will be optional. Each time you start WBmerge, it checks to see if a new version is available. If the new version is a required version you will have to install it and if it is an optional version, you can elect to install it or not.

Please note when disconnected from the Internet, WBmerge will still attempt to check for new versions, but will stop checking within a few seconds, then WBmerge will open.

Version Information - <https://www.workbooktools.com/version-info>

Please note that when you install a new version of WBmerge you will be prompted to accept the WBmerge license terms.

Below is an example of a mandatory version update. Most version updates will be mandatory, but on rare occasion a version update may be optional.



Troubleshooting the Installation Process

Make sure to carefully follow the instructions in this document for your operating system.

Depending on the Internet browser you use to open the WBmerge installation point, you may see slightly different screens. You may be asked to run setup.exe or to save it to your computer then run it.

Confirm that the computer you are installing WBmerge on meets the minimum system requirements on page 2 of this document.

If you run into a problem, stop and check this document. If needed, start the installation process over. It is possible you did not override Microsoft SmartScreen and the installation of WBmerge was stopped.

We strongly recommend making sure all Microsoft software updates are installed on your computer before installing or running WBmerge. Please make sure all Microsoft updates have been applied to your system before opening a support case.

You should also have antivirus software with current updates installed on the computer you wish to install WBmerge on before starting the installation process.

You do not need to possess administrative privileges to install WBmerge, since it utilizes Microsoft ClickOnce deployment technology.

You do need to possess administrative privileges to install the required minimum version of the Microsoft .NET frameworks if it is not already installed on your computer.

If you are installing WBmerge on a computer owned by your employer, you may be blocked from installing software without your employer's permission. Before trying to install WBmerge on your work computer, please check with your employer to confirm you are permitted to do so.

Disclaimer

This document is provided for informational purposes only.

The information contained in this document represents the current view of Workbook Tools, LLC on the issues discussed as of the date of publication.

Information provided in this document is provided 'as is' without warranty of any kind, either express or implied, including but not limited to the implied warranties of merchantability, fitness for a particular purpose and freedom from infringement.

Copyright: All content is the property of Workbook Tools, LLC or its content suppliers and protected by United States and international copyright laws.

Workbook Tools, LLC is not affiliated in any way with Microsoft. 'Microsoft' is a registered trademark of Microsoft Corporation.